

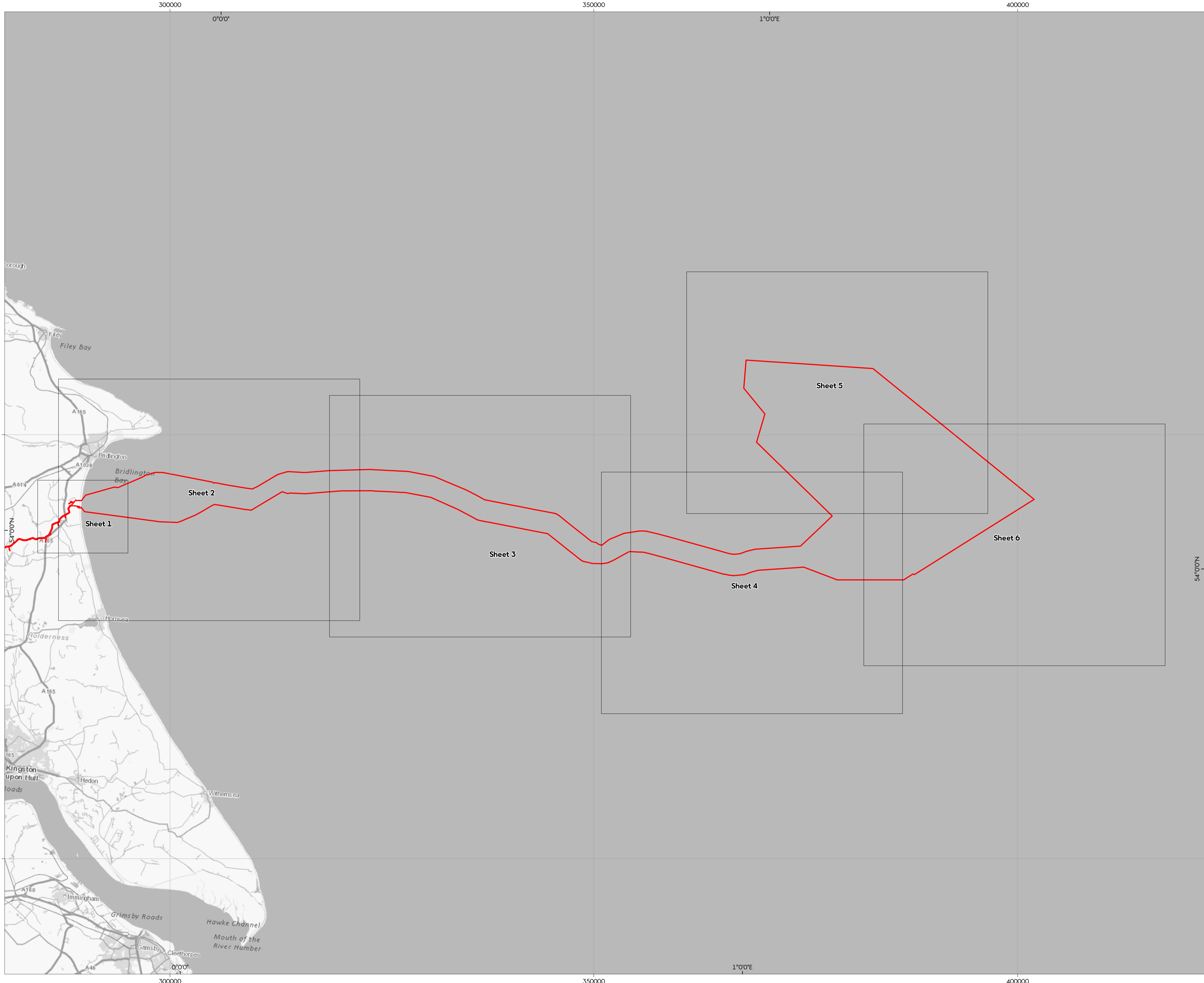


Hornsea Project Four: Plans and Drawings

PINS Document Reference: D1.8.1
APFP Regulation 5(2)(m)

Volume D1, 8.1: Offshore Historic Environment Plan

Prepared David Brooks, Ørsted, June 2021
Checked Hannah Towner-Roethe, Ørsted, June 2021
Accepted Keith Lynch, Ørsted, June 2021
Approved Jamie Baldwin, Ørsted, June 2021
Doc No: D1.8.1
Version: B



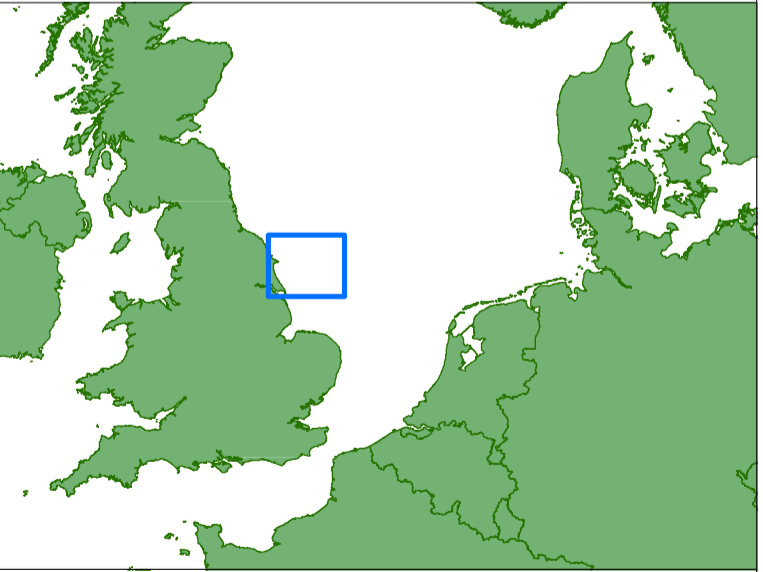
Hornsea Project Four Offshore Wind Farm

Offshore Historic Environment Plan Index Sheet

APFP Regulations Reference : 5(2)(m) Application Document Number : D1.6.1

- Sheet Boundary
- Order Limits

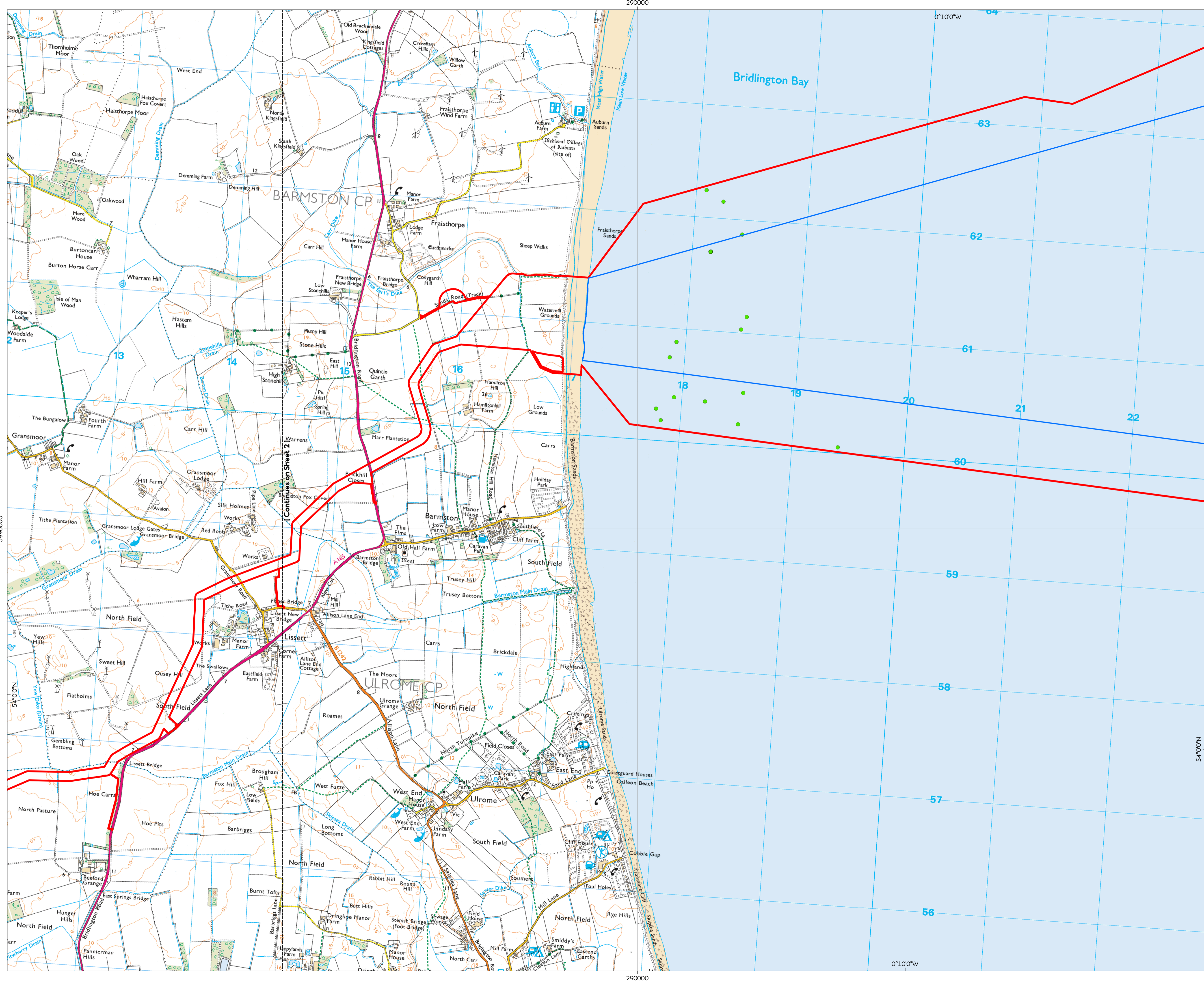
Sources:
 Service Layer Credits: Contains OS data © Crown Copyright and database right 2020.
 © Crown copyright and database rights (2020) Ordnance Survey 0100031673. All rights reserved.



Coordinate system: ETRS 1989 UTM Zone 31N
 Vertical reference: LAT
 Scale @ A1: 1:200,000

REV	REVISION	DATE
1	Issue for DCO	11/09/2020
2	Revised Area Area in Northwest corner	16/06/2021

Offshore Historic Environment Plan - Index Sheet
 Document no: HOW040356
 Created by: XDAOO
 Checked by: HATOW
 Accepted by: KEILY
 Approved by: JAMIB



Hornsea Project Four Offshore Wind Farm

Offshore Historic Environment Plan

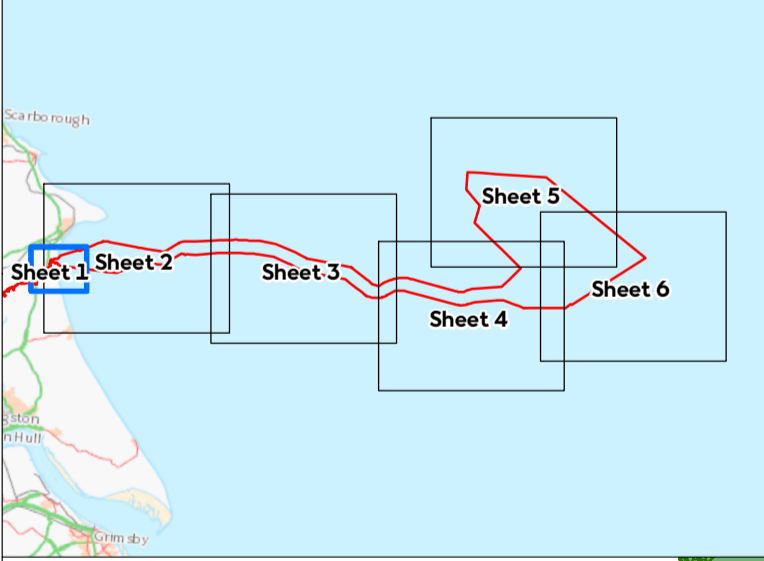
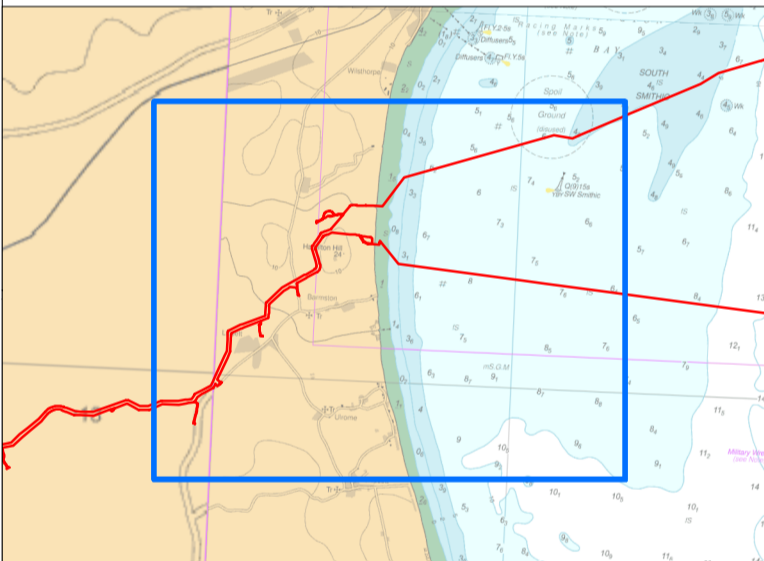
Sheet 1 of 6

APFP Regulations Reference: 5/2(m) Application Document Number: D1.8.1

- Sheet Boundary
- Limit of Deviation (excluding temporary construction area)
- Order Limits
- Geophysical Survey Anomalies**
- Anomalies of Archaeological Potential**
- Low

Note: * Wrecks & ** NRHE Monument locations within intertidal area may appear to lie onshore due to the scale of base map as well as the size of symbol used to represent wrecks & NRHE Monument locations. Please note that symbols used to represent wrecks & NRHE Monument locations are NOT shown to scale.

Sources:
 *© United Kingdom Hydrographic Office (2020).
 The UKHO OS Data contained in this figure was obtained in May 2019.
 **© National Record of the Historic Environment, Historic England (2020).
 The NRHE GIS Data contained in this figure was obtained in May 2019.
 Service Layer Credits: Contains OS data © Crown Copyright and database right 2020.
 © Crown copyright and database rights (2020) Ordnance Survey 0100031673. All rights reserved.



Coordinate system: ETRS 1989 UTM Zone 31N
 Vertical reference: LAT
 Scale @ A1: 1:15,000

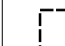








REV	REMARK	DATE
A	Final Issue/ISS	14/09/2020
A	Reduced Area in northwest corner	14/09/2021

Offshore Historic Environment Plan
 Document no: HOW040356
 Created by: XDAOO
 Checked by: HATOW
 Accepted by: KEILY
 Approved by: JAMIB

Hornsea Project Four Offshore Wind Farm

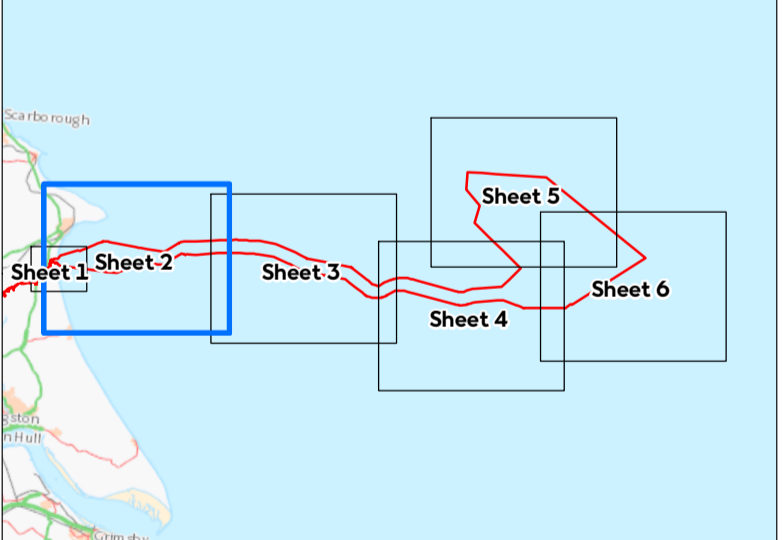
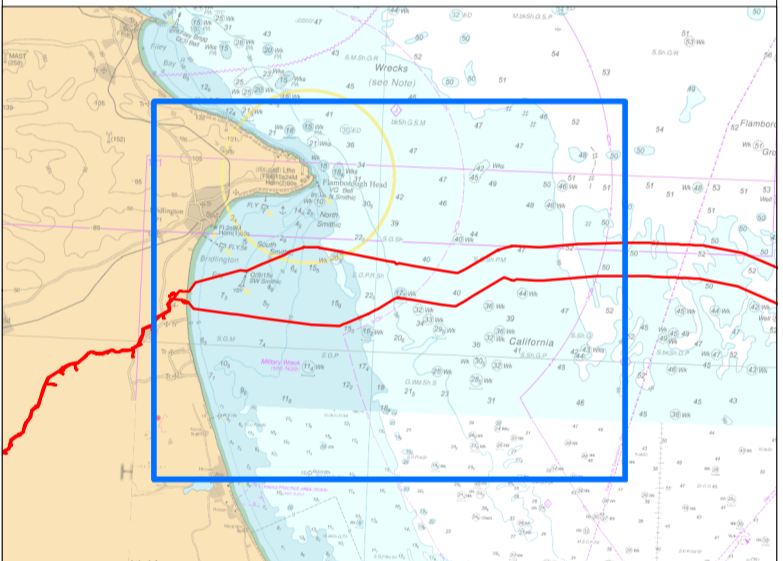
Offshore Historic Environment Plan Sheet 2 of 6

APFP Regulations Reference: 5(2)(m) Application Document Number: D1.8.1

-  Sheet Boundary
-  Limit of Deviation (excluding temporary construction area)
-  Order Limits
- Historic England Records****
 -  NRHE Monument Location**
- Wrecks & Obstruction (UKHO)***
 -  Wrecks & Obstruction*
 -  Archaeological Exclusion Zones (derived from UKHO known wrecks) (NOT TO SCALE)
- Geophysical Survey Anomalies**
 - Anomalies of Archaeological Potential**
 -  Medium
 -  Low
 -  Archaeological Exclusion Zones (derived from the geophysical survey) (NOT TO SCALE)

Note: * Wrecks & ** NRHE Monument locations within intertidal area may appear to lie onshore due to the scale of base map as well as the size of symbol used to represent wrecks & NRHE Monument locations. Please note that symbols used to represent wrecks & NRHE Monument locations are NOT shown to scale.

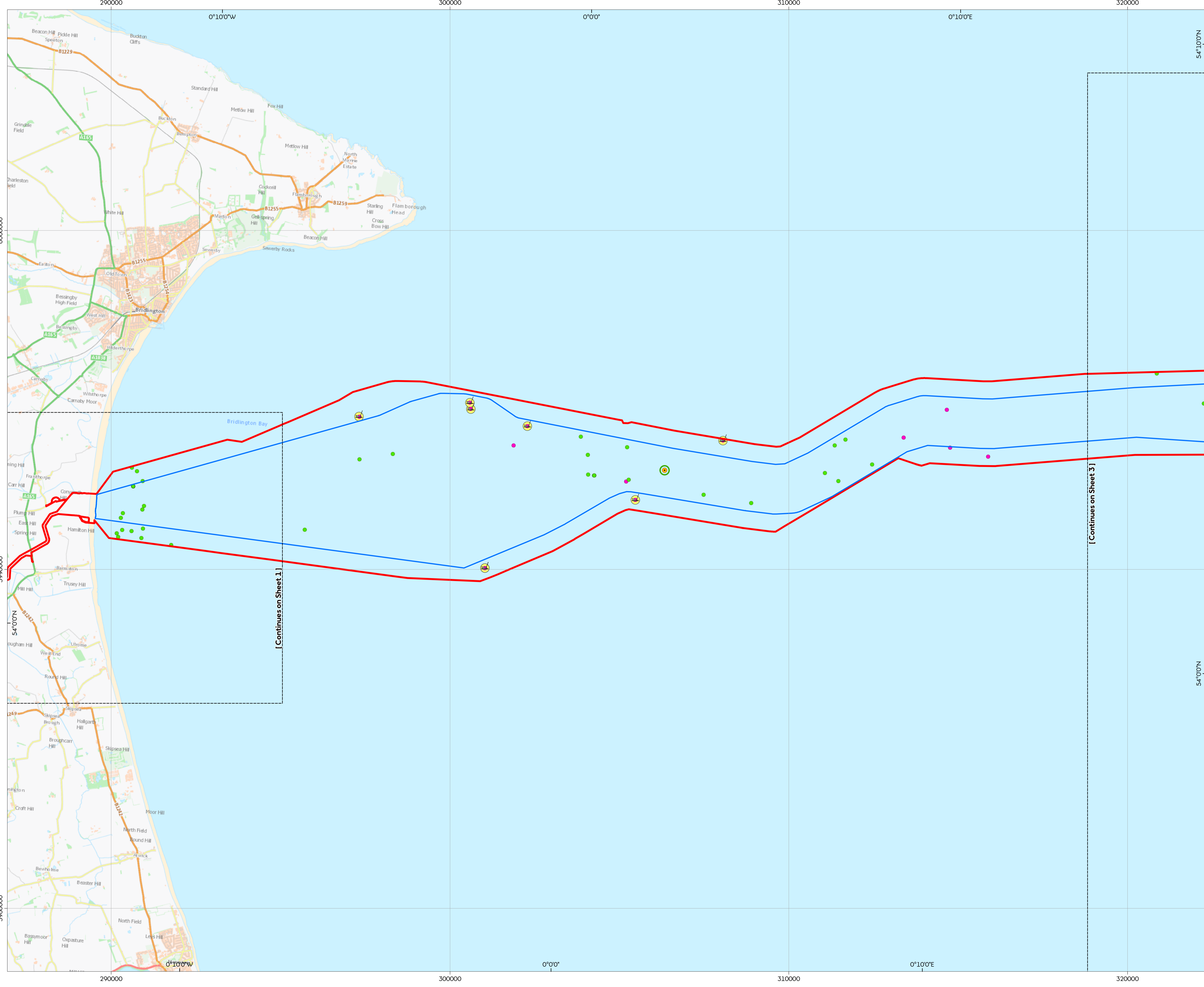
Sources:
 *© United Kingdom Hydrographic Office (2020).
 The UKHO GIS Data contained in this figure was obtained in May 2019.
 **© National Record of the Historic Environment, Historic England (2020).
 The NRHE GIS Data contained in this figure was obtained in May 2019.
 Service Layer Credits: Contains OS data © Crown Copyright and database right 2020.
 © Crown copyright and database rights (2020) Ordnance Survey 0100031673. All rights reserved.



Coordinate system: ETRS 1989 UTM Zone 31N
 Vertical reference: LAT
 Scale @ A1: 1:50,000

REV	REMARK	DATE
A	Final Issue/ISS	14/09/2023
A	Reduced Array Area in northwest corner	14/09/2023

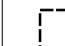






Offshore Historic Environment Plan
 Document no: HOW040356
 Created by: XDAOO
 Checked by: HATOW
 Accepted by: KEILY
 Approved by: JAMIB



Hornsea Project Four Offshore Wind Farm

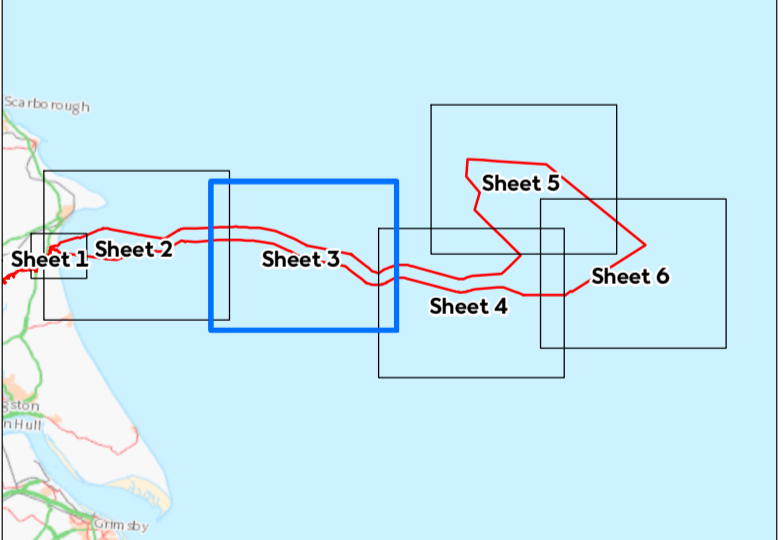
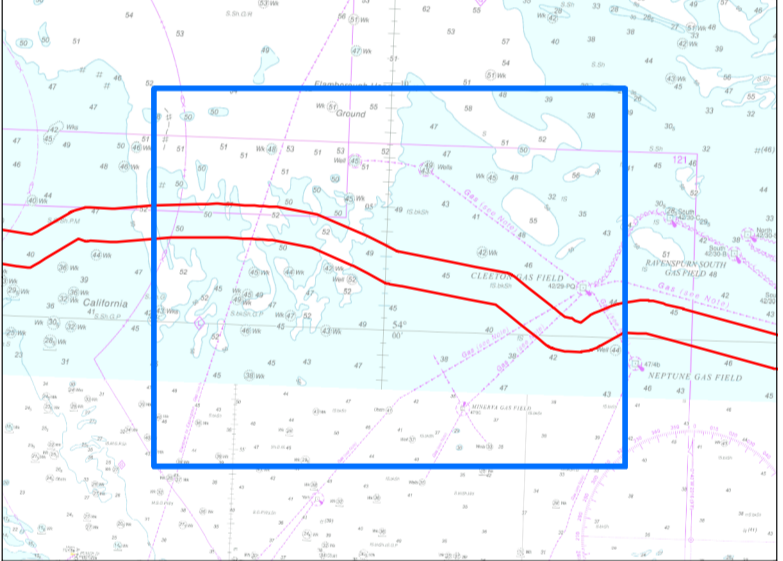
Offshore Historic Environment Plan Sheet 3 of 6

APFP Regulations Reference : 5(2)(m) Application Document Number : D1.8.1

-  Sheet Boundary
-  Limit of Deviation (excluding temporary construction area)
-  Order Limits
- Historic England Records****
-  NRHE Monument Location**
- Geophysical Survey Anomalies**
- Anomalies of Archaeological Potential**
-  Medium
-  Low
-  Archaeological Exclusion Zones (derived from the geophysical survey) (NOT TO SCALE)

Note : * Wrecks & ** NRHE Monument locations within intertidal area may appear to lie onshore due to the scale of base map as well as the size of symbol used to represent wrecks & NRHE Monument locations. Please note that symbols used to represent wrecks & NRHE Monument locations are NOT shown to scale.

Sources:
 * United Kingdom Hydrographic Office [2020].
 The UKHO OS Data contained in this figure was obtained in May 2019.
 ** National Record of the Historic Environment, Historic England [2020].
 The NHRE GIS Data contained in this figure was obtained in May 2019.
 Service Layer Credits: Contains OS data © Crown Copyright and database right 2020.
 © Crown copyright and database rights [2020] Ordnance Survey 0100031673. All rights reserved.




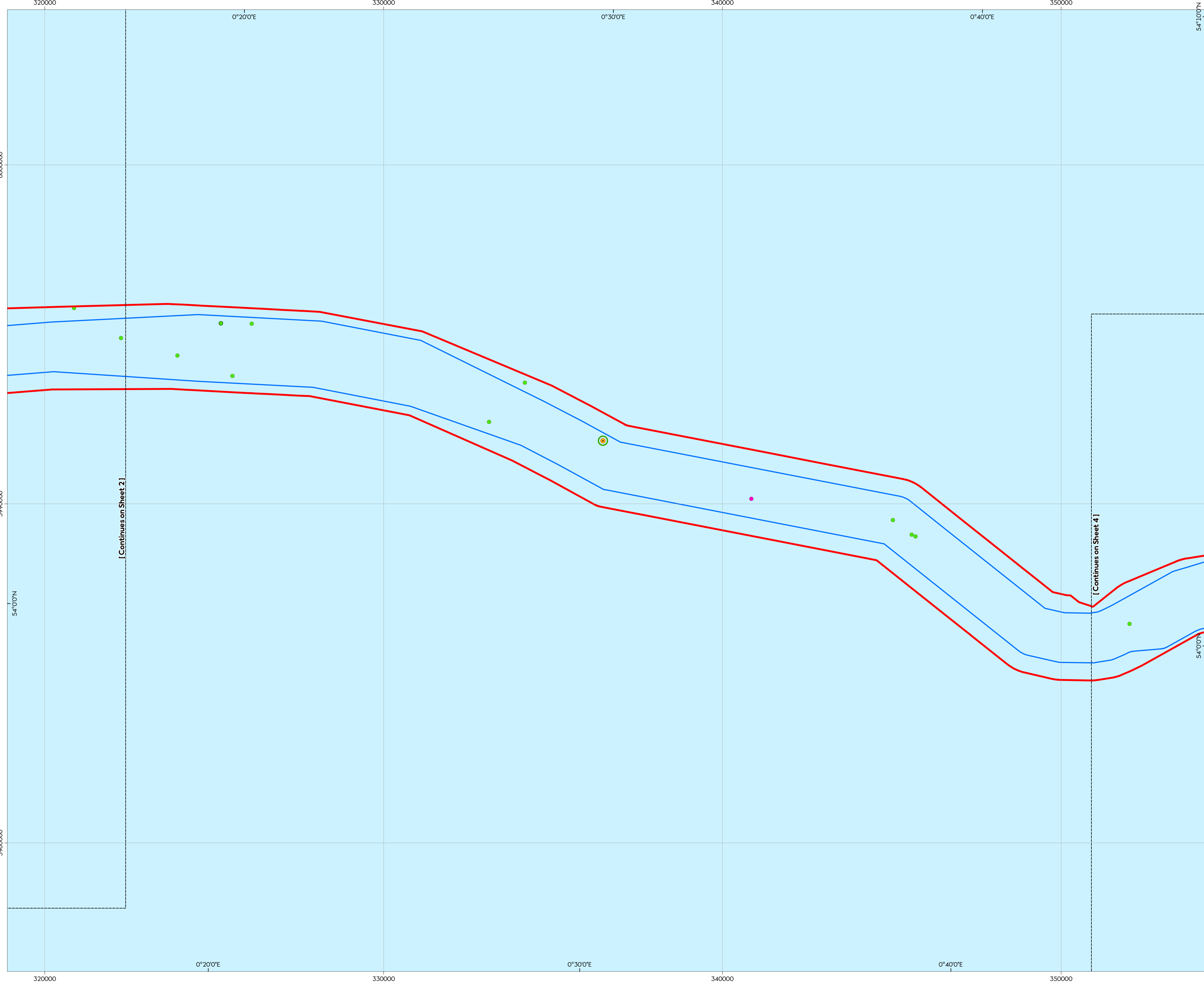
Coordinate system: ETRS 1989 UTM Zone 31N
 Vertical reference: LAT
 Scale @ A1: 1:50,000

0 0.75 1.5 3 Kilometers
 0 0.375 0.75 1.5 Nautical Miles

GRID NORTH

REV	REMARK	DATE
A	Reduced Array Area in northwest corner	18/09/2021

Offshore Historic Environment Plan
 Document no: HOW040356
 Created by: XDAOO
 Checked by: HATOW
 Accepted by: KEILY
 Approved by: JAMIB

[Continues on Sheet 2]

[Continues on Sheet 4]

Hornsea Project Four Offshore Wind Farm

Offshore Historic Environment Plan Sheet 4 of 6

APFP Regulations Reference : 5(2)(m) Application Document Number : D1.8.1

- Sheet Boundary
- Limit of Deviation (excluding temporary construction area)
- Order Limits

Wrecks & Obstruction (UKHO)*

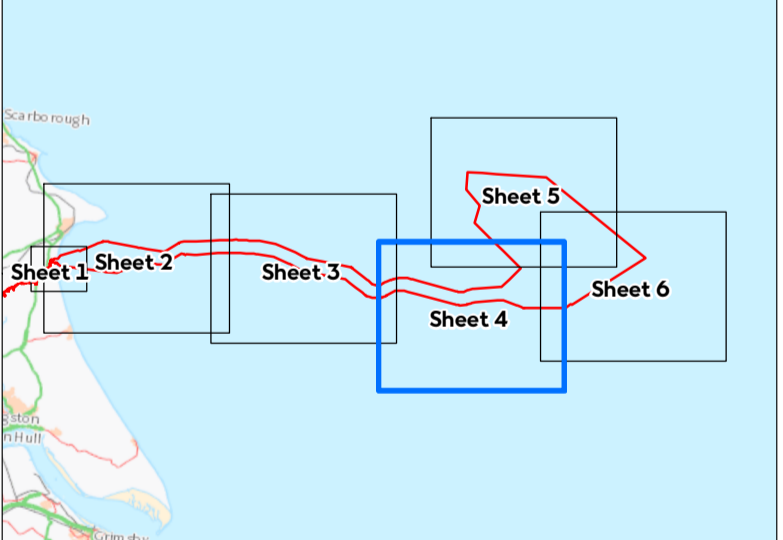
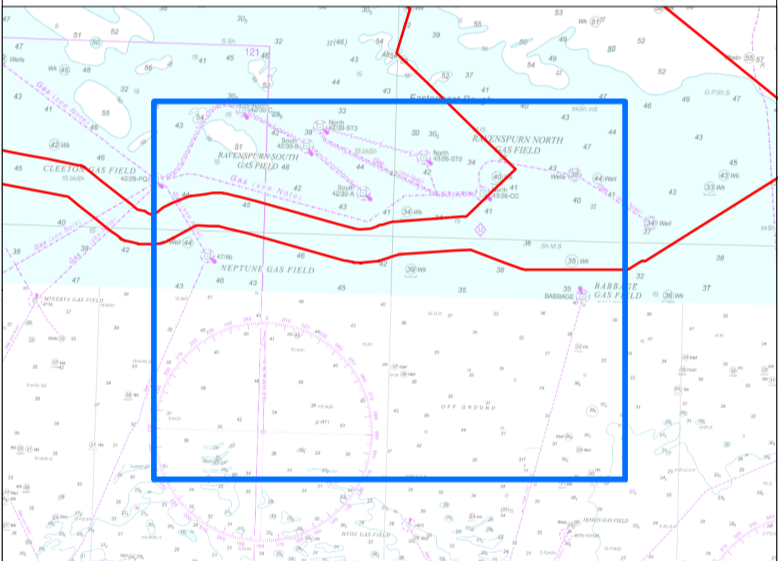
- Wrecks & Obstruction*
- Archaeological Exclusion Zones (derived from UKHO known wrecks) (NOT TO SCALE)

Geophysical Survey Anomalies

- #### Anomalies of Archaeological Potential
- High
 - Medium
 - Low
 - Archaeological Exclusion Zones (derived from the geophysical survey) (NOT TO SCALE)

Note : * Wrecks & ** NRHE Monument locations within intertidal area may appear to lie onshore due to the scale of base map as well as the size of symbol used to represent wrecks & NRHE Monument locations. Please note that symbols used to represent wrecks & NRHE Monument locations are NOT shown to scale.

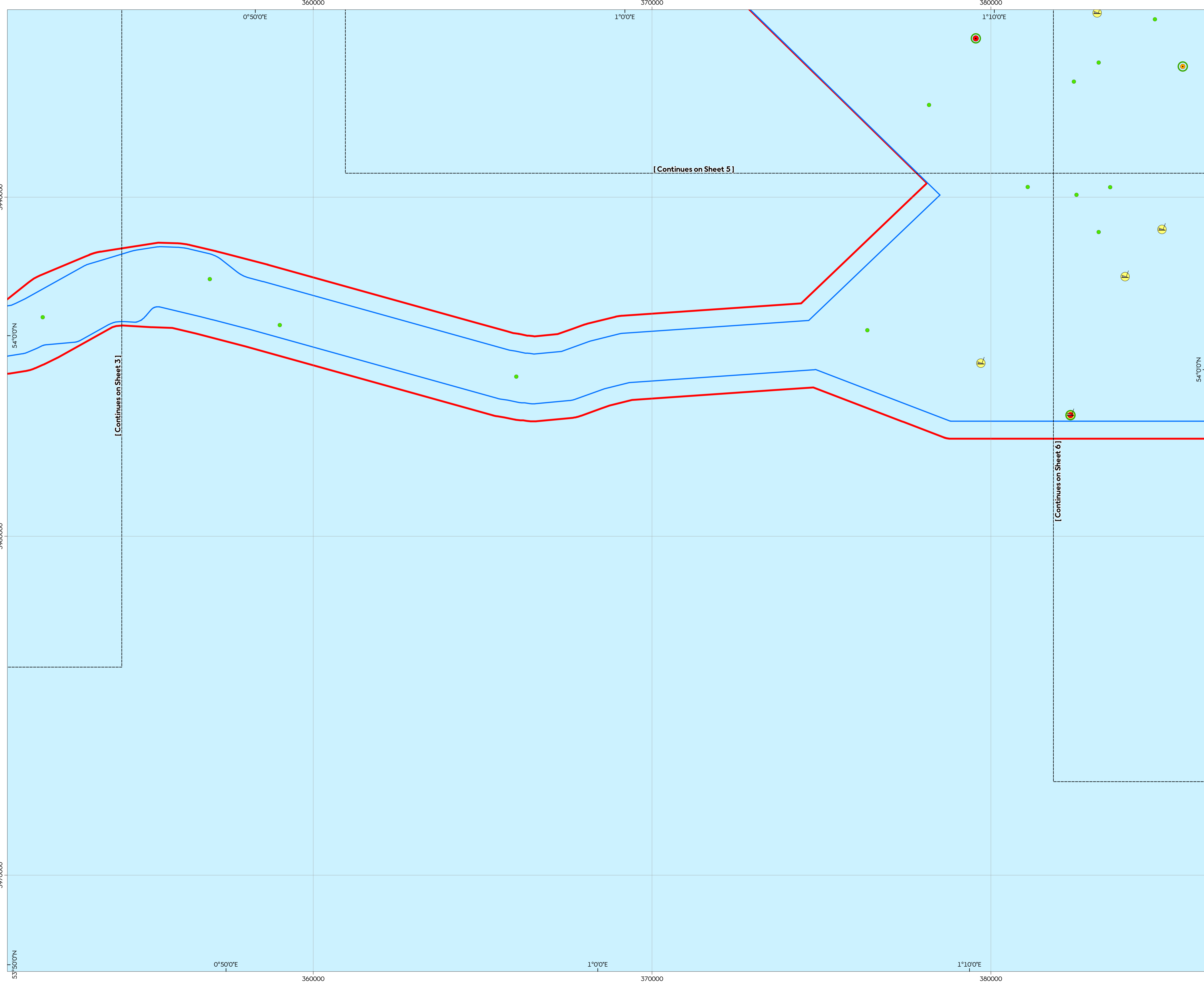
Sources:
 *© United Kingdom Hydrographic Office (2020).
 The UKHO GIS Data contained in this figure was obtained in May 2019.
 **© National Record of the Historic Environment, Historic England (2020).
 The NRHE GIS Data contained in this figure was obtained in May 2019.
 Service Layer Credits: Contains OS data © Crown Copyright and database right 2020.
 © Crown copyright and database rights (2020) Ordnance Survey 0300031673. All rights reserved.



Coordinate system: ETRS 1989 UTM Zone 31N
 Vertical reference: LAT
 Scale @ A1: 1:50,000

REV	REMARK	DATE
A	Reduced Array Area in northwest corner	18/09/2021

Offshore Historic Environment Plan
 Document no: HOW040356
 Created by: XDAOO
 Checked by: HATOW
 Accepted by: KEILY
 Approved by: JAMIB



[Continues on Sheet 5]




[Continues on Sheet 3]

[Continues on Sheet 6]


Hornsea Project Four Offshore Wind Farm

Offshore Historic Environment Plan Sheet 5 of 6



APFP Regulations Reference : 5(2)(m) Application Document Number : D1.8.1

-  Sheet Boundary
-  Limit of Deviation (excluding temporary construction area)
-  Order Limits

Historic England Records**





-  NRHE Monument Location**

Wrecks & Obstruction (UKHO)*

-  Wrecks & Obstruction*
-  Archaeological Exclusion Zones (derived from UKHO known wrecks) (NOT TO SCALE)

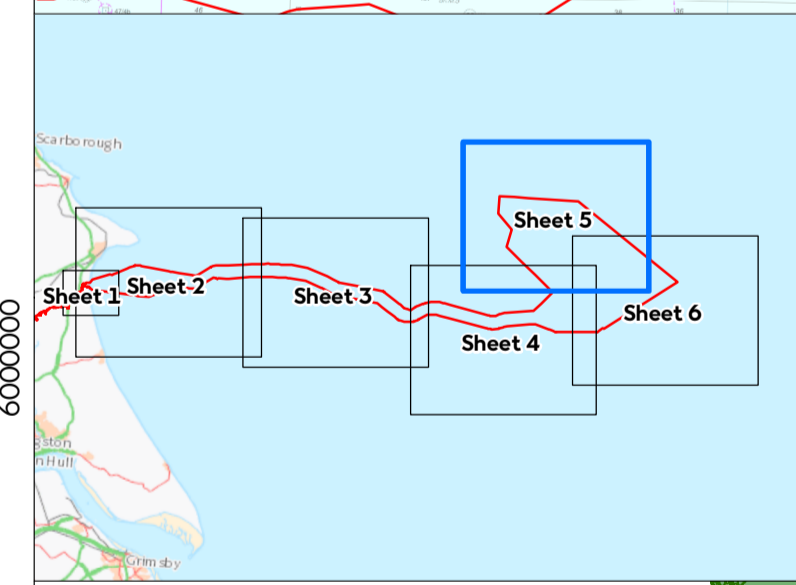
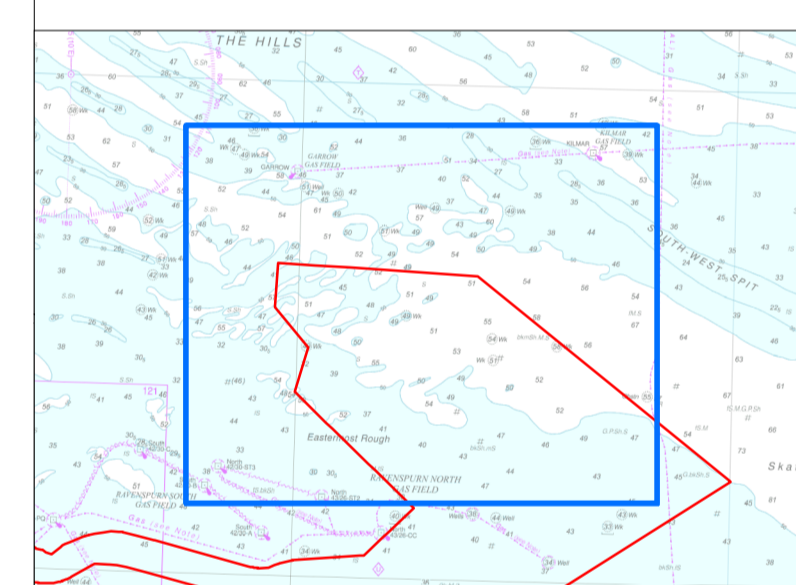
Geophysical Survey Anomalies

Anomalies of Archaeological Potential

-  High
-  Medium
-  Low
-  Archaeological Exclusion Zones (derived from the geophysical survey) (NOT TO SCALE)

Note : * Wrecks & ** NRHE Monument locations within intertidal area may appear to lie onshore due to the scale of base map as well as the size of symbol used to represent wrecks & NRHE Monument locations. Please note that symbols used to represent wrecks & NRHE Monument locations are NOT shown to scale.

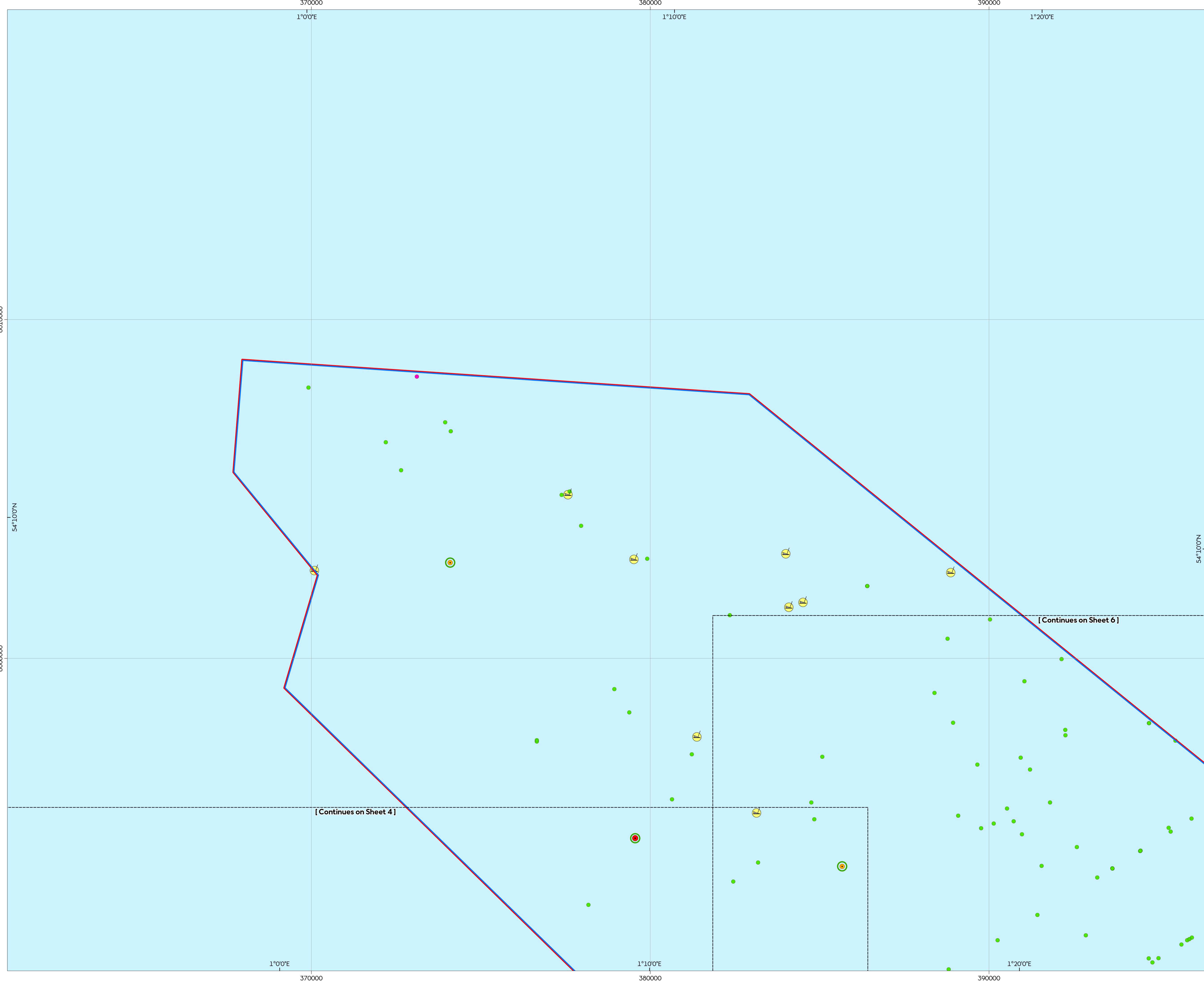
Sources:
 *© United Kingdom Hydrographic Office (2020).
 The UKHO OS Data contained in this figure was obtained in May 2019.
 **© National Record of the Historic Environment, Historic England (2020).
 The NHRE GIS Data contained in this figure was obtained in May 2019.
 Service Layer Credits: Contains OS data © Crown Copyright and database right 2020.
 © Crown copyright and database rights (2020) Ordnance Survey 0100031673. All rights reserved.



Coordinate system: ETRS 1989 UTM Zone 31N
 Vertical reference: LAT
 Scale @ A1: 1:50,000

REV	REMARK	DATE
A	Reduced Array Area in northwest corner	18/09/2021










Offshore Historic Environment Plan
 Document no: HOW040356
 Created by: XDAOO
 Checked by: HATOW
 Accepted by: KEILY
 Approved by: JAMIB



Hornsea Project Four Offshore Wind Farm

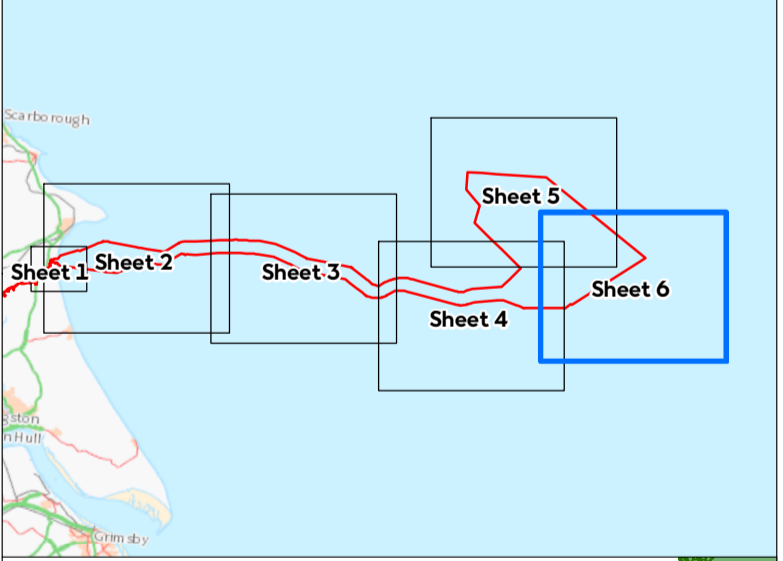
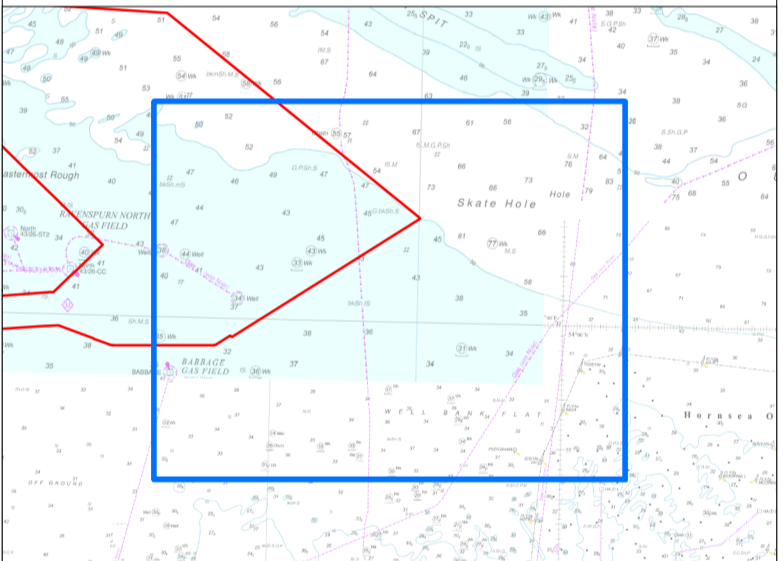
Offshore Historic Environment Plan Sheet 6 of 6

APFP Regulations Reference : 5(2)(m) Application Document Number : D1.8.1

-  Sheet Boundary
 -  Limit of Deviation (excluding temporary construction area)
 -  Order Limits
- Wrecks & Obstruction (UKHO)***
-  Wrecks & Obstruction*
 -  Archaeological Exclusion Zones (derived from UKHO known wrecks) (NOT TO SCALE)
- Geophysical Survey Anomalies**
- Anomalies of Archaeological Potential**
-  High
 -  Medium
 -  Low
 -  Archaeological Exclusion Zones (derived from the geophysical survey) (NOT TO SCALE)

Note : * Wrecks & ** NRHE Monument locations within intertidal area may appear to lie onshore due to the scale of base map as well as the size of symbol used to represent wrecks & NRHE Monument locations. Please note that symbols used to represent wrecks & NRHE Monument locations are NOT shown to scale.

Sources:
 *© United Kingdom Hydrographic Office (2020).
 The UKHO GIS Data contained in this figure was obtained in May 2019.
 **© National Record of the Historic Environment, Historic England (2020).
 The NRHE GIS Data contained in this figure was obtained in May 2019.
 Service Layer Credits: Contains OS data © Crown Copyright and database right 2020.
 © Crown copyright and database rights (2020) Ordnance Survey 0100031673. All rights reserved.



Coordinate system: ETRS 1989 UTM Zone 31N
 Vertical reference: LAT
 Scale @ A1: 1:50,000

0 0.75 1.5 3 Kilometers
 0 0.375 0.75 1.5 Nautical Miles

GRID NORTH

REV	REMARK	DATE
A	Reduced Array Area in northwest corner	14/09/2021

Offshore Historic Environment Plan
 Document no: HOW040356
 Created by: XDAOO
 Checked by: HATOW
 Accepted by: KEILY
 Approved by: JAMIB

